



Hobart Jackson
ESTATES

Amos St.

S. Scales St.

**2.04
Acres**

S. Scales Street, Reidsville, NC 27323
Located south of Turner Drive and S. Scales Street intersection.

For Sale
\$100,000

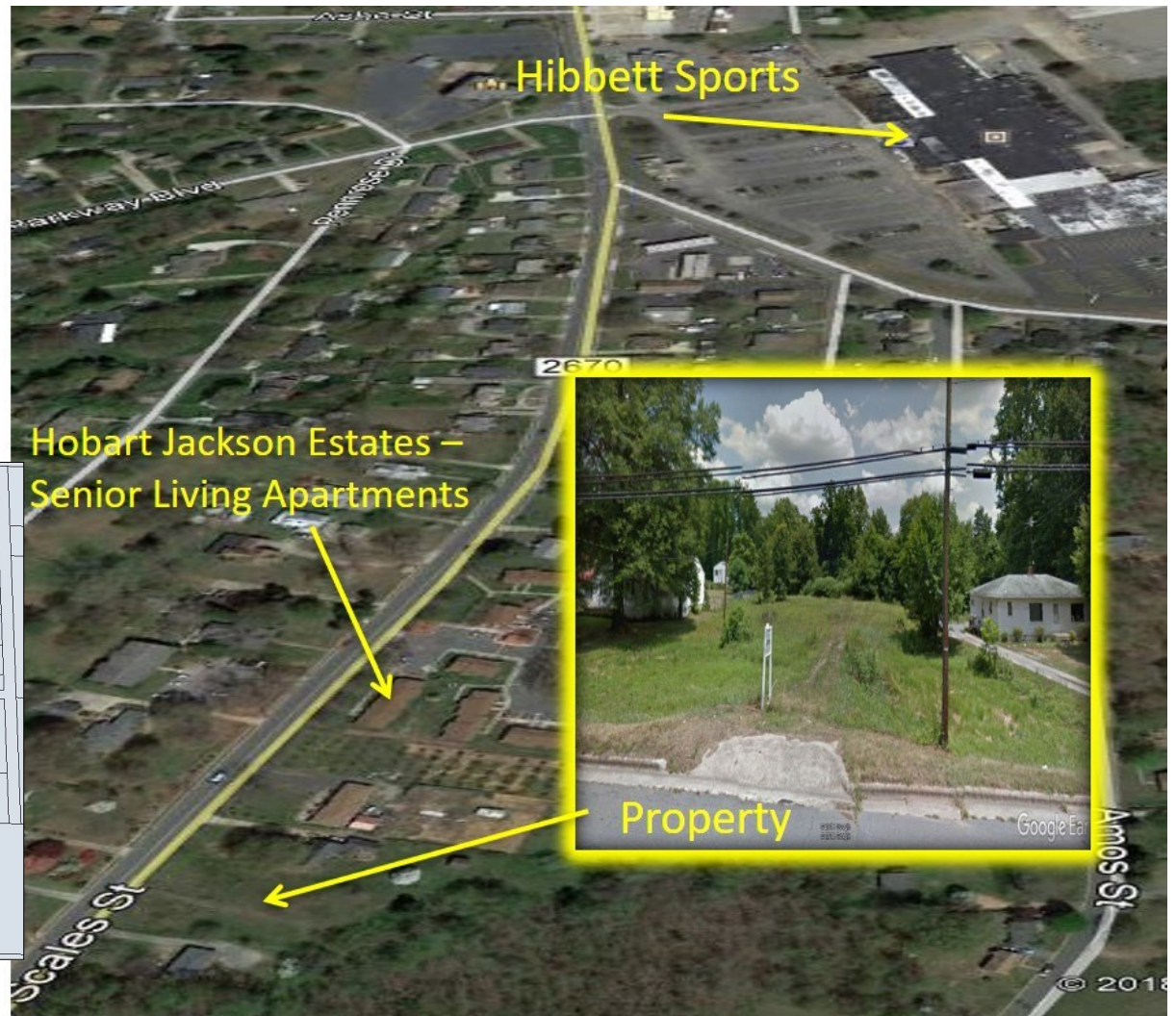


Contact:
Brian Burnham, Broker
bburnham@bipinc.com
P: 336-541-5522
C: 336-362-5612



Property Features

- 2.04 acres of land
- Zoned R12RD
- Ideal use - Multi-family, Commercial, Church, Office, Condo, Town homes
- Positioned just outside of town
- Partially wooded lot
- City water and sewer
- This parcel is 1/4 mile south of intersection of Turner Drive and S. Scales Street



1007 Battleground Avenue, Suite 401
Greensboro, NC 27408
336-379-8771 | www.bipinc.com

The statements and figures herein while not guaranteed are secured from sources believed to be authoritative. This offering is subject to change of price, prior lease or sale and or withdrawal without notice. Prospects should verify all information.