



510 North Elam Avenue, Greensboro, NC 27403  
Located In Wesley Long Professional Building

For Lease

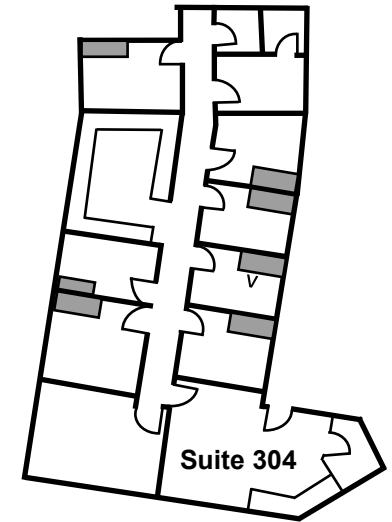
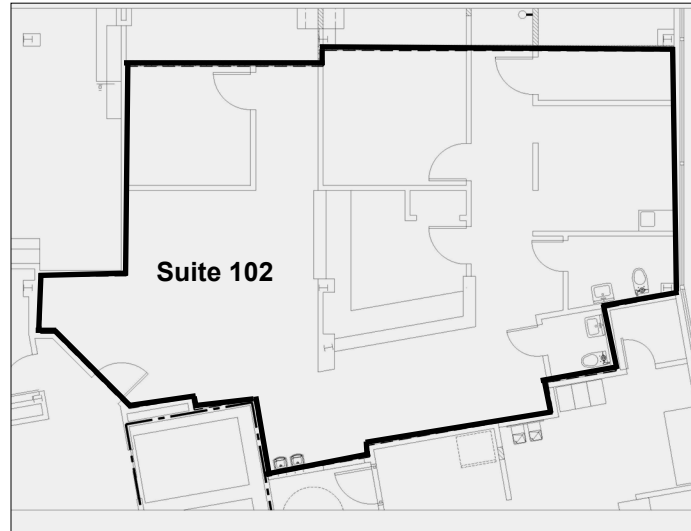


Contact:  
Bill Strickland, CCIM, MBA  
bstrickland@bipinc.com  
336-369-5974



## Property Features

- Suite 102 - 1,509 +/- RSF
- Suite 304 - 1,876 +/- SF
- 3-story 35,292 +/- RSF prime, class A medical/dental attractive office building
- Ample parking - 176 spaces
- Zoned - PI
- Elevator
- Telecom/fiber: AT&T, Spectrum
- Green features: Motion detected lighting, water conserving fixtures
- Fully sprinklered
- Located across from Wesley Long Hospital, near Cone Health Behavioral Health Hospital and minutes from Moses Cone Hospital
- Located near restaurants, banks, hotels, shopping and residential neighborhoods
- Easy access to Wendover Avenue and minutes from CBD
- City bus stop



## Wesley Long Hospital & Behavioral Health Hospital



- |   |   |
|---|---|
| <b>A</b> Main Entrance Road to Hospital, Emergency Department and Cancer Center | <b>2</b> Physician Parking                      |
| <b>B</b> Emergency Department Entrance and Parking                              | <b>3</b> Patient/Visitor Parking                |
| <b>C</b> Hospital and Cancer Center Entrances                                   | <b>4</b> Event Parking                          |
| <b>D</b> Education Center Entrance  | <b>5</b> Cancer Center                          |
| <b>E</b> N. Elam Medical Plaza and Parking                                      | <b>6</b> Wesley Long Professional Building      |
| <b>1</b> Employee Parking   | <b>7</b> LeBauer Healthcare                     |
|   | <b>8</b> Cone Health Behavioral Health Hospital |
|   | <b>9</b> Cone Health Outpatient Pharmacy        |
|   | <b>10</b> Cone Health Kids Connection           |



Lease Information: \$23.50/SF  
Full Service Lease



440 West Market Street, Greensboro, NC 27401  
336-379-8771 www.bipinc.com

The statements and figures herein while not guaranteed are secured from sources believed to be authoritative. This offering is subject to change of price, prior lease or sale and or withdrawal without notice. Prospects should verify all information.