

3058 NC Hwy 68 S, High Point, NC 27409

For Sale  
\$850,000  
6.67 Acres



Austin Hill, Broker  
ahill@bipinc.com  
P: 336-541-5510

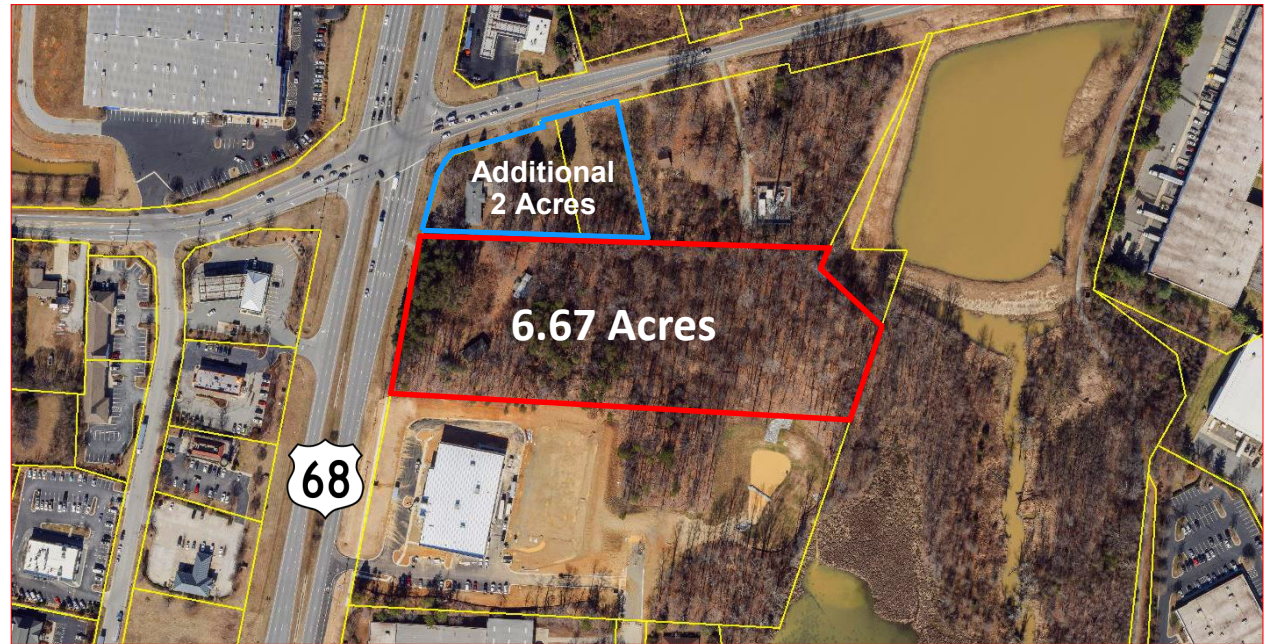
Brian Burnham, Broker  
bburnham@bipinc.com  
P: 336-541-5522  
C: 336-362-5612



# 3058 Hwy 68 S High Point, NC 27409

## Property Features

- 6.67-Acre land parcel at the Southeast corner of Greensboro, Gallimore Dairy Road and NC Hwy 68 (Eastchester Drive)
- Additional 2 acres for sale (by others)
- 2 miles from PTI Airport and easy access to I-40
- Site offers premium visibility to 4-way intersection hosted by Industrial, Retail, Hospitality and Medical developments all within 1 mile.
- City utilities
- 2" water line
- Zoned AG (Agricultural)

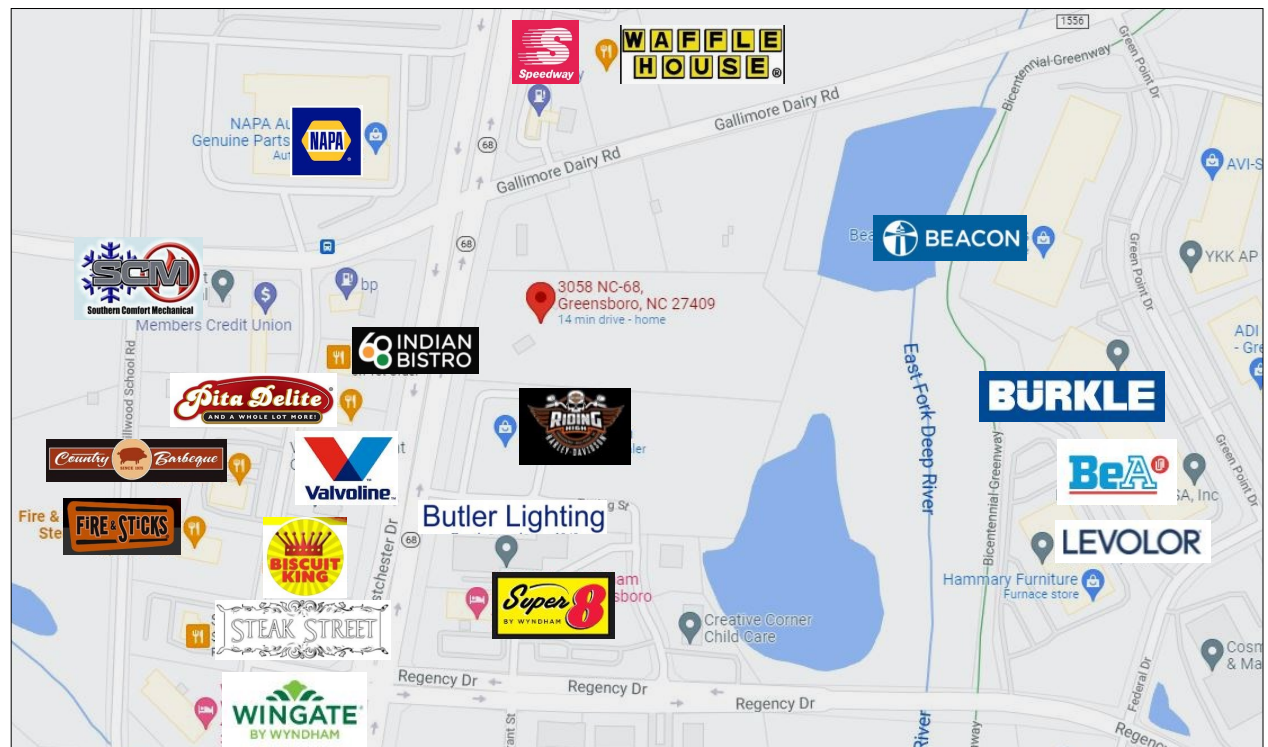


	2 Miles	5 Miles
2021 Population	8,404	97,921
Avg HH Income	\$85,405	\$84,045
Traffic Count: 31,615 VPD (2018)		

The statements and figures herein while not guaranteed are secured from sources believed to be authoritative. This offering is subject to change of price, prior lease or sale and or withdrawal without notice.  
Prospects should verify all information.



440 West Market Street, Greensboro, NC 27401  
336-379-8771 [www.bipinc.com](http://www.bipinc.com)





# 3058 NC Hwy 68 S High Point, NC

