

**3041-3043 S. Church Street
Burlington, NC 27215**

FOR LEASE



3041-3043 S. Church Street, Burlington, NC 27215

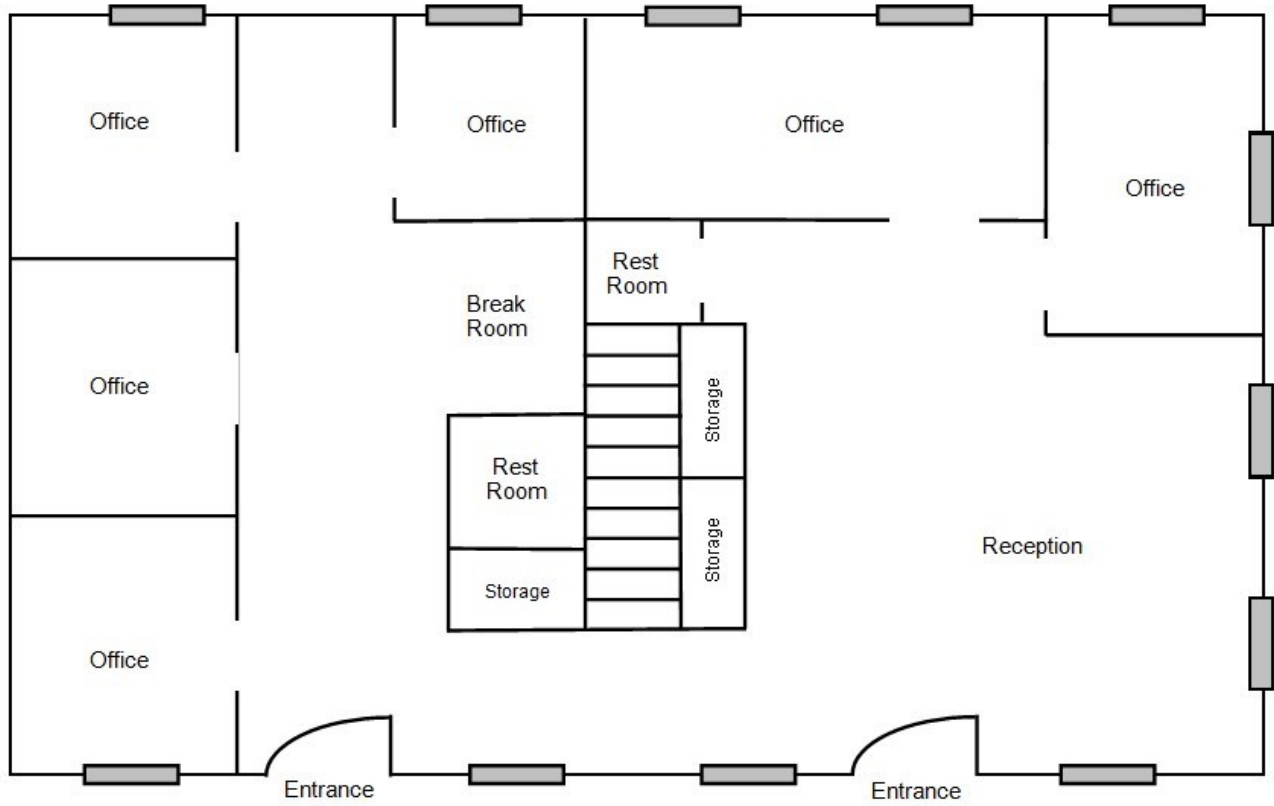
Property Features

Located in Southwest Burlington, this spacious, two-story office condo offers access to I-40/I-85. Features fourteen (14) individual offices with three restrooms and two breakrooms. Professionally managed and well maintained with a great tenant mix.

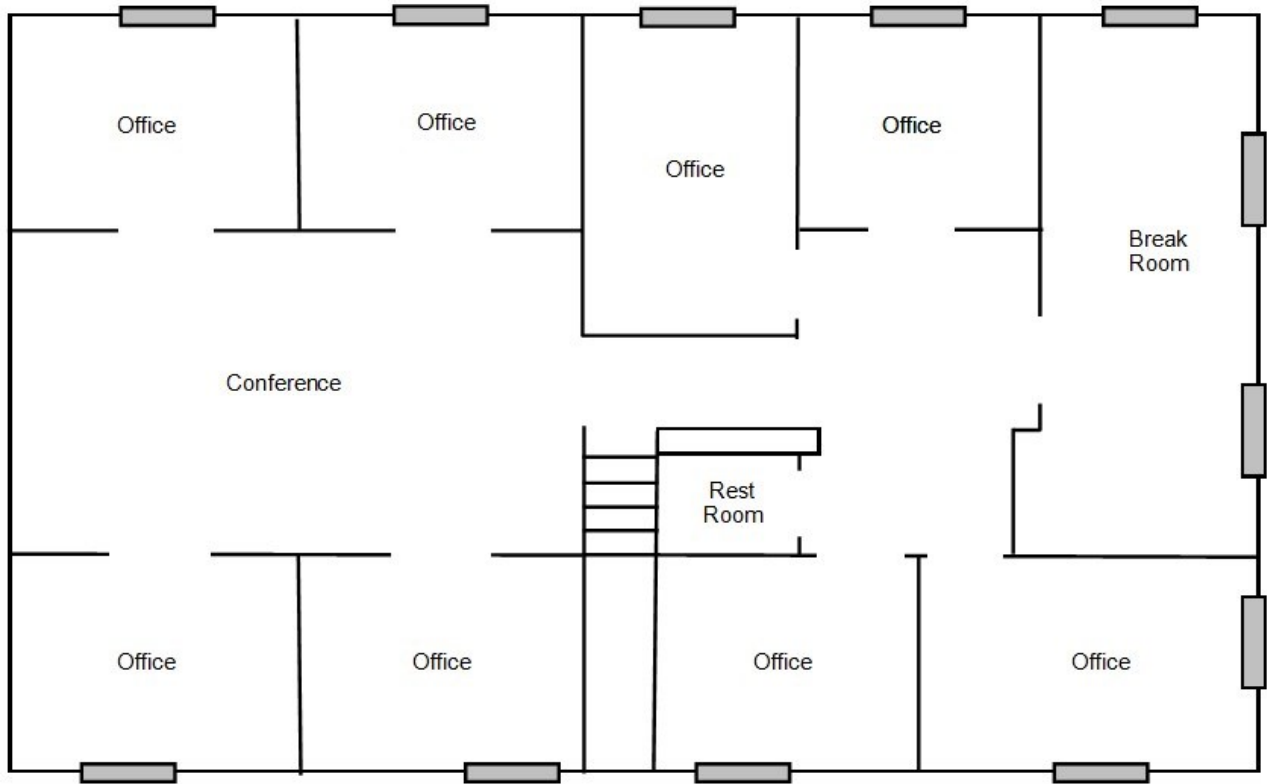
- Square Footage: 3,672 +/- SF
- Lease Price: \$12 PSF Modified Gross
- Fourteen offices, 3 restrooms, two breakrooms
- Professional, local management
- Shared parking
- Zoned: Office
- Year Built: 1990



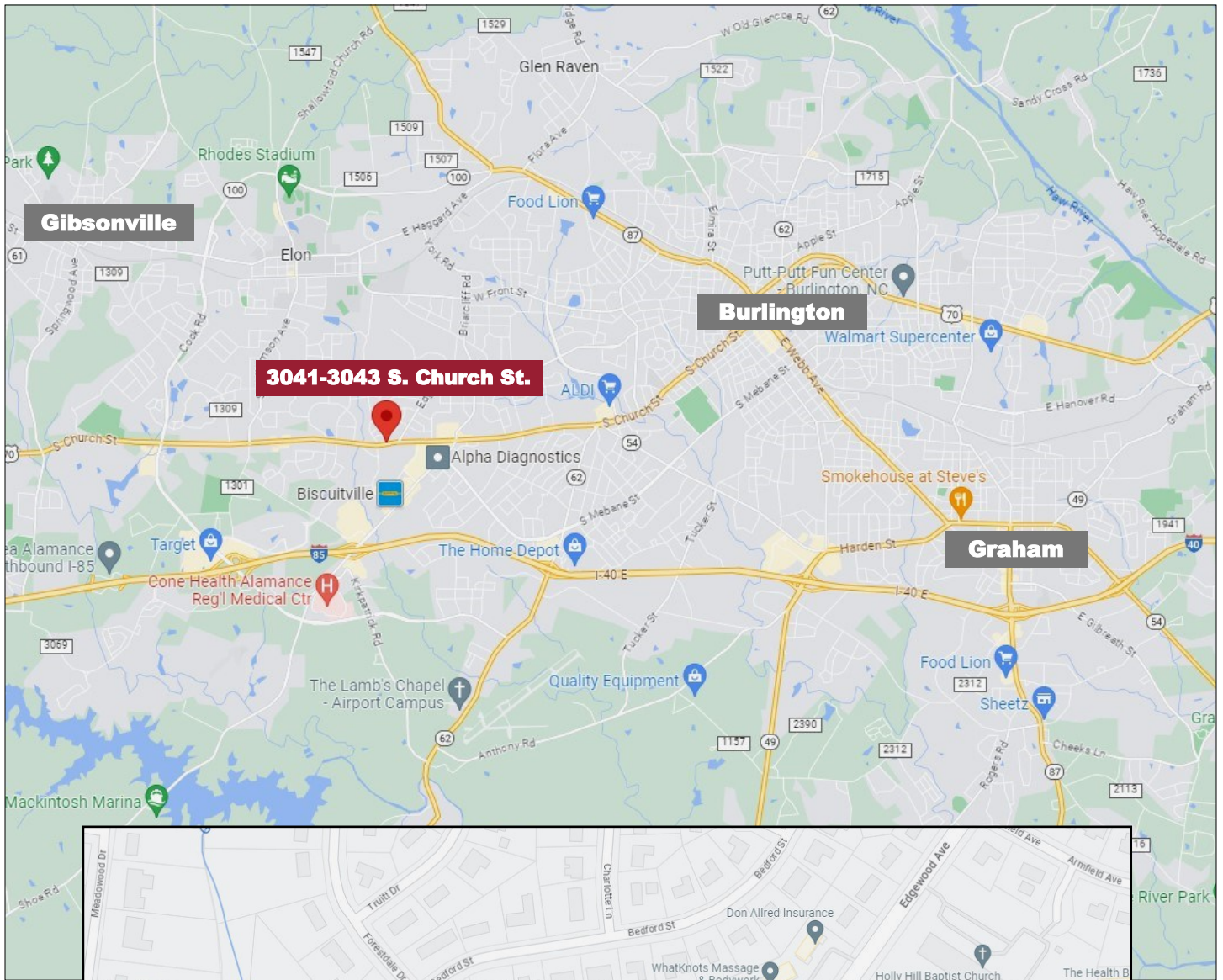
First Floor



Second Floor



This sketch is intended for illustrative purposes only and is not drawn to scale.



The statements and figures herein while not guaranteed are secured from sources believed to be authoritative. This offering is subject to change of price, prior lease or sale and or withdrawal without notice. Prospects should verify all information.