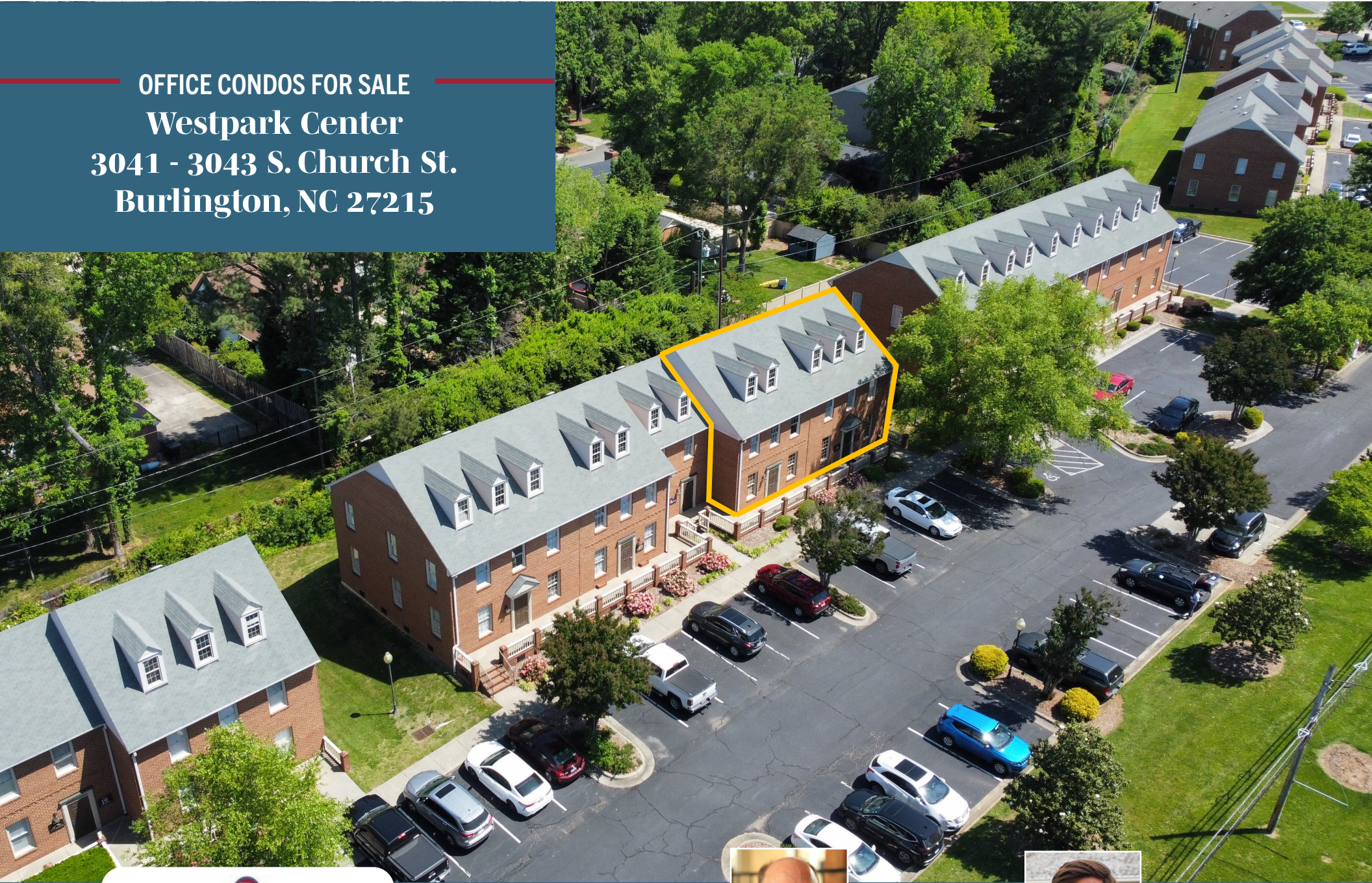


**OFFICE CONDOS FOR SALE**  
**Westpark Center**  
**3041 - 3043 S. Church St.**  
**Burlington, NC 27215**



1007 Battleground Avenue, Suite 401  
Greensboro, NC 27408  
336-379-8771



Vince Howard, Broker  
vhoward@bipinc.com  
P: 336-369-5971  
C: 336-202-6314



Doug Fogartie, Broker  
dfogartie@bipinc.com  
P: 336-544-8012  
C: 919-605-6093



**Westpark Center**  
3041 - 3043 S. Church Street  
Burlington, NC 27215

**FOR SALE**

Located in Southwest Burlington, this spacious, two-story office condo offers access to I-40/I-85. Features fourteen (14) individual offices with three restrooms and two breakrooms. Professionally managed and well maintained.

**Property Details**

Two-story Office Condo

Property is a Condo Association - \$2/SF annually

Zoning 0

Parking Not assigned

Year Built 1990

Directions: Take the Huffman Mill Rd. exit from I-40 and head NE. Left on Forestdale Dr. Cross over S. Church St. and the condos are on the right





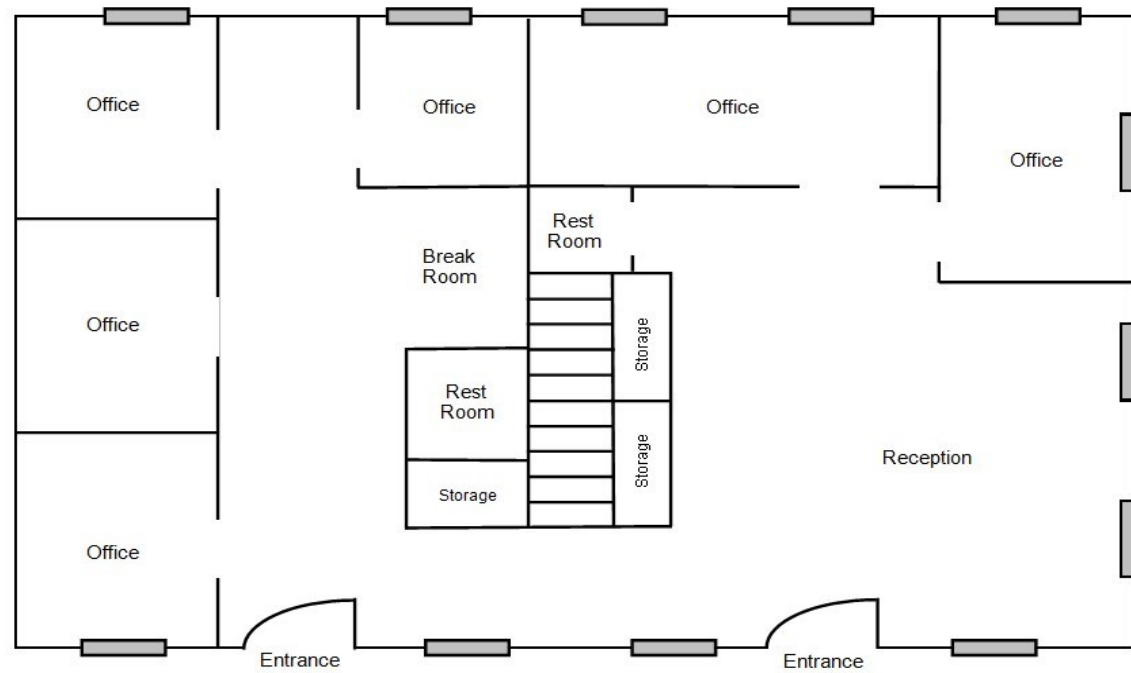
**3041 – 3043  
S. Church Street  
Burlington, NC 27215**

**3,600 +/- SF**

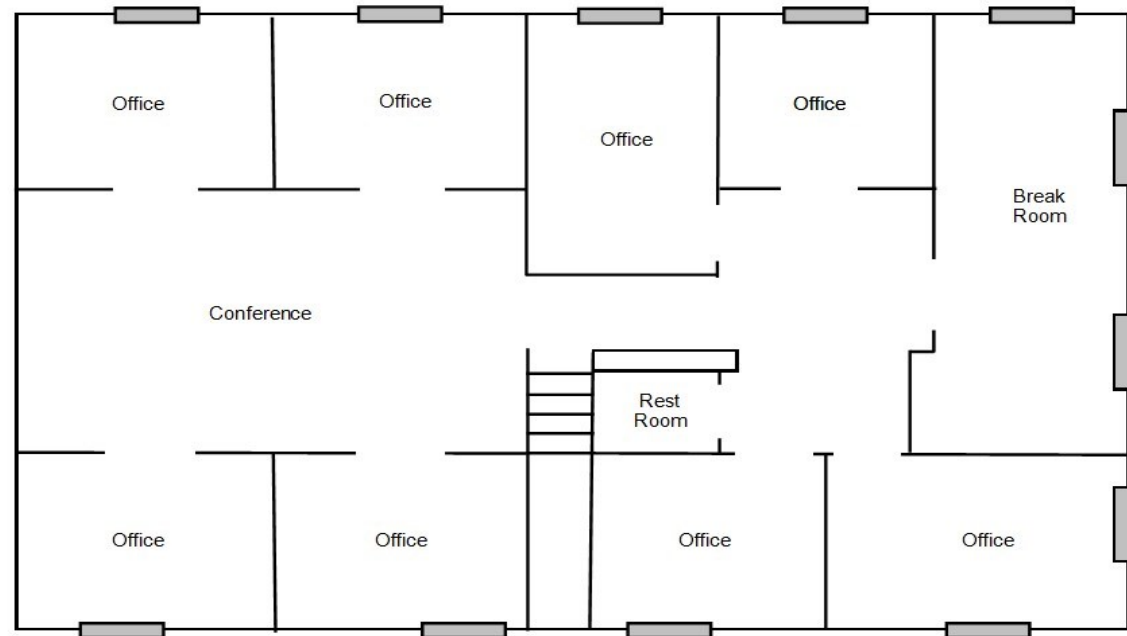
**\$452,000**

- Fourteen offices, 3 restrooms, two breakrooms
- Move-in ready
- Desirable layout with private offices and open conference area
- Prime location with easy access to I-40
- 1.7 miles to Alamance Regional Hospital
- Close proximity to various restaurants and retail centers





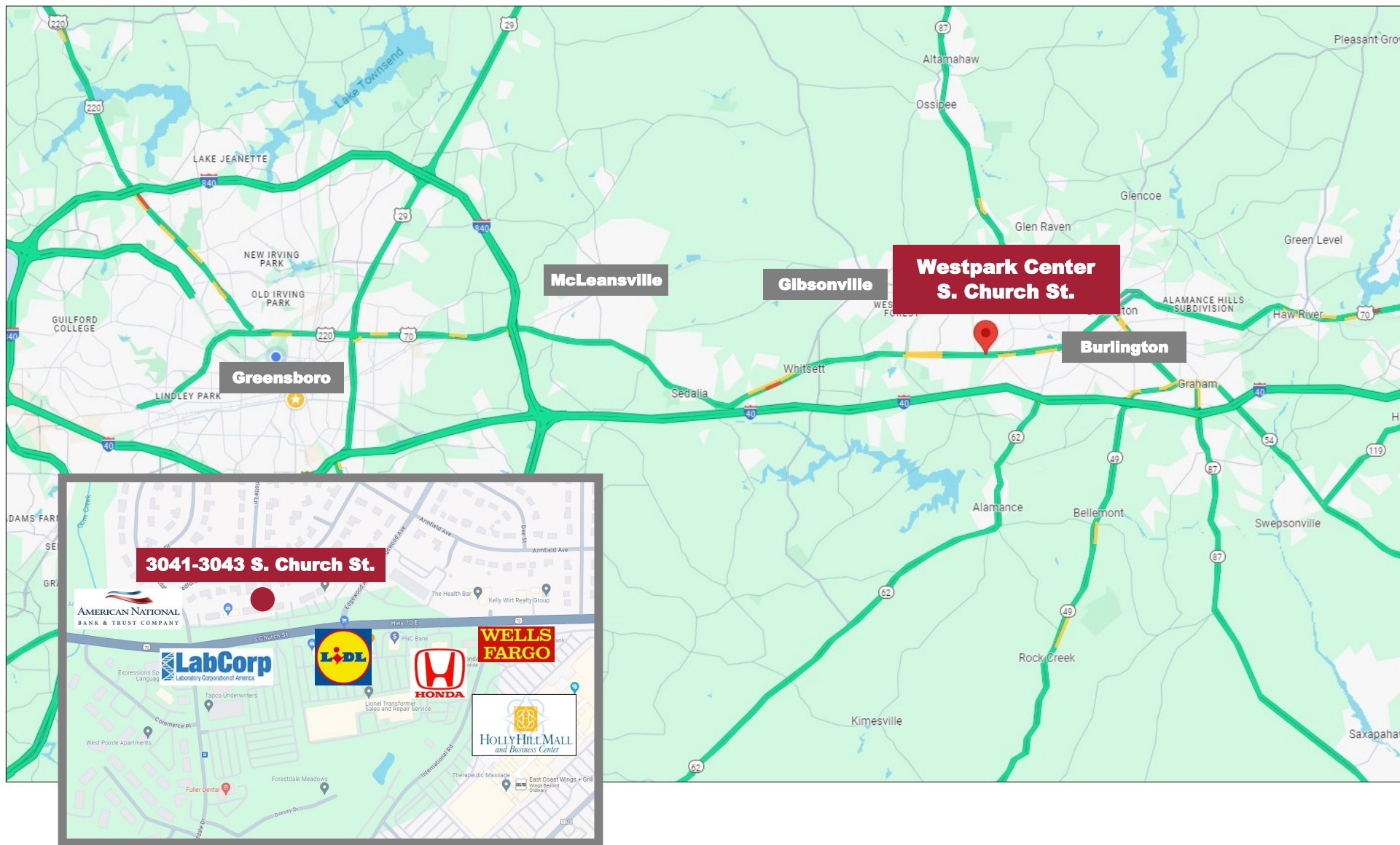
First Floor



Second Floor

Floor plan not to scale.  
Used for illustrative purposes only.





1007 Battleground Avenue, Suite 401, Greensboro NC 27408

The statements and figures herein while not guaranteed are secured from sources believed to be authoritative. This offering is subject to change of price, prior lease or sale and or withdrawal without notice. Prospects should verify all information.